

# Alcatel-Lucent Enterprise OmniAccess Stellar AP1320 Series Installation Guide

060672-10 Rev. B



## Summary of Installation Steps

- WLAN Planning. Usually, a comprehensive site survey is required before installation, such as installation location, brackets, cables, power source, etc.
- Unpack the AP box and check all contents
- Install the AP bracket on ceiling or wall
- Installing the AP
- Connecting required cables
- Power connection
- Verifying post-installation connectivity
- AP provisioning

*Access points are radio transmission devices and are subject to governmental regulation. Network administrators who are responsible for the configuration and operation of access points must comply with local broadcast regulations. Specifically, access point must use channel assignments appropriate to the location where the access point will be deployed.*

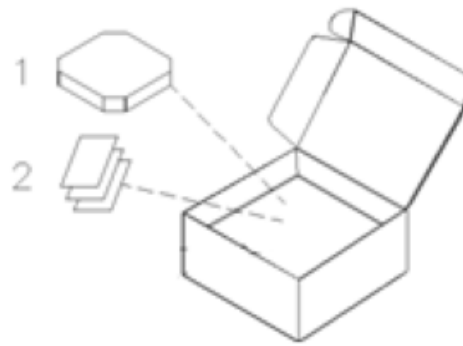
## Package Contents

Item	Name	Qty	Unit
1	Access Point	1	Pcs
2	Quick Start Guide	1	Pcs
	Installation Guide	1	Pcs
	Regulatory Compliance and Safety Information	1	Pcs
	User Guide Info Card	1	Pcs

## ◆ Optional Accessories (To be ordered separately)

Item	Name	Description
1	OAW-AP-MNT-B	Indoor mounting kit, Type B1(9/16") and B2(15/16") for T shaped ceiling rail.
2	OAW-AP-MNT-C	Indoor mounting kit, Type C1(Open Silhouette) and C2 (Flanged Interlude), for other shaped ceiling rail mounting.
3	OAW-AP-MNT-W	Indoor mounting kit, Type W wall and ceiling mounting with screws.

Figure 1: Product Packing



*Inform your ALE sales representative of incorrect, missing, or damaged parts. If possible, retain the carton, including the original packing materials. Use these materials to repack and return the unit to the supplier if needed. Additional mounting kits for use with the OmniAccess Stellar access points are sold separately. Contact your ALE sales representative for details.*

## Hardware Overview

The following sections outline the hardware components of the OAW-AP1320 Series access point.

Figure 2: OAW-AP1321 Front View

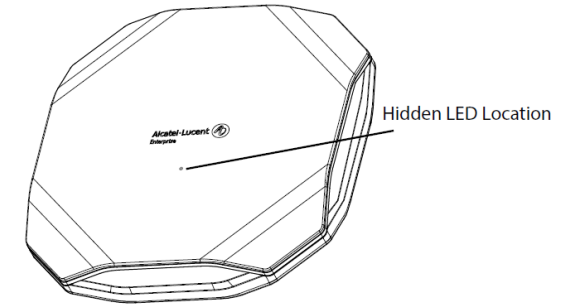


Figure 3: OAW-AP1322 Front View

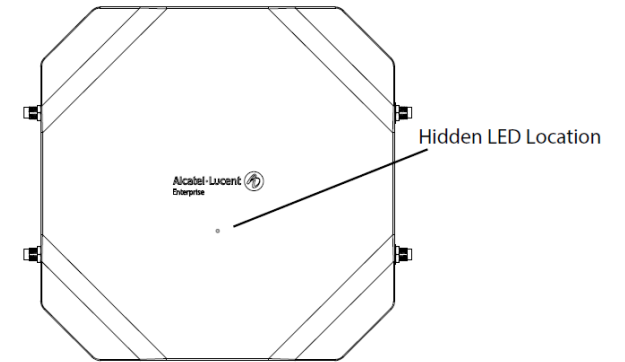


Figure 4: OAW-AP1322 Including Antennas Front View

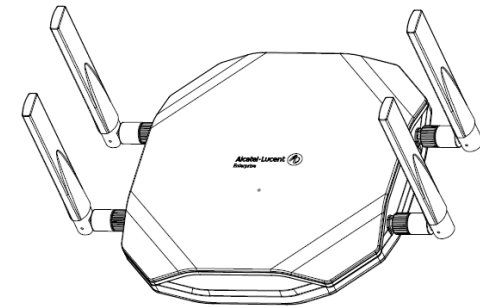
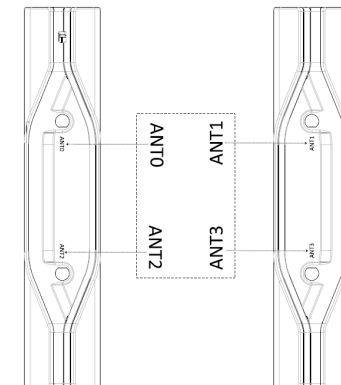
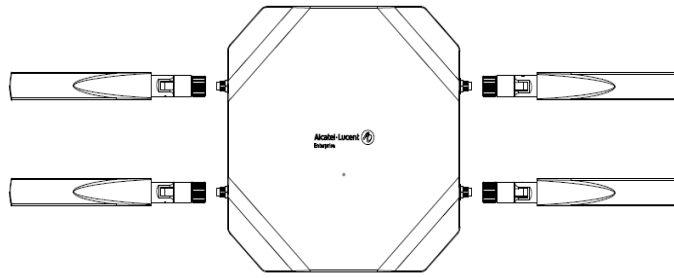


Figure 5: Install the external antennas on OAW-AP1322.



<https://www.al-enterprise.com>

The Alcatel-Lucent name and logo are trademarks of Nokia used under license by ALE. To view other trademarks used by affiliated companies of ALE holding, visit: <https://www.al-enterprise.com/en/legal/trademarks-copyright>. All other trademarks are the property of their respective owners. The information presented is subject to ALE without notice. Neither ALE Holding nor any of its affiliates assumes any responsibility for inaccuracies contained herein. (2020)

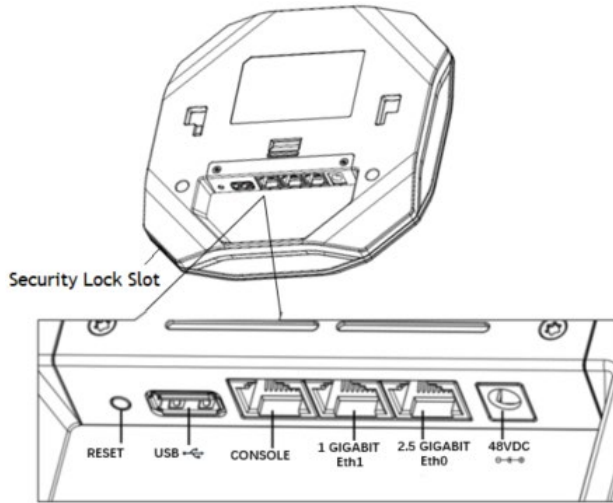


- ◆ ANT0-1 dual band, ANT2-3 5GHz.
- ◆ External antennas are sold separately.

#### LED

The OAW-AP1320 Series access point is equipped with hidden LED display that indicates different status with different color. For the details of the LED status, please refer to the Quick Start Guide.

Figure 6: OAW-AP1320 Series Back View



#### ◆ OAW-AP1320 series External Interfaces

Table 1

Interface	Specifications
DC Power Socket	The AP has a single 48V DC power jack socket to support powering through an AC-to-DC power adapter. If PoE is not available, an optional AC-DC adapter kit (sold separately) can be used to power the AP.
2.5 Gigabit Eth0	1x 100/1000/2.5GBASE-T autosensing (RJ-45) port, Power over Ethernet (PoE).
1 Gigabit Eth1	1x 10/100/1000BASE-T autosensing (RJ-45) port, Power over Ethernet (PoE).
Console	The console port is an RJ-45 female connector and can be used to connect to a terminal for direct local management. <b>Note:</b> Currently for use by Service & Support only.
USB	USB 2.0 host interface (Type A, output current 0.5A )
Reset	Factory reset. Press reset button for 5s, AP LEDs will quickly flash for 3s, then AP will restart and restore factory configurations.
Security Lock Slot	The AP is equipped with a security lock slot for additional security.

Table 2  
Ethernet Port Pinout

Connector	Pin	Signal Name	PoE
	1	RJ45_DA+	PoE-
	2	RJ45_DA-	PoE-
	3	RJ45_DB+	PoE+
	4	RJ45_DC+	PoE+
	5	RJ45_DC-	PoE+
	6	RJ45_DB-	PoE+
	7	RJ45_DD+	PoE-
	8	RJ45_DD-	PoE-

Table 3

Console Port Pinout

Connector	Pin	Signal Name	Function	
	3	TXD	Transmit	
	4	GND	Ground	
	5	GND	Ground	
	6	RXD	Receive	
	Pins not listed are not connected.			

- ◇ Note: The serial console port allows you to connect the AP to a serial terminal or a laptop for direct local management. This port is an RJ-45 female connector with the pinouts described in Table 3. Currently for use by Service & Support only.

#### Power

The OAW-AP1320 series access point supports direct DC power adapter (48V DC nominal, sold separately) and Power over Ethernet (PoE). The DC power connector port is located on the back of the device, as shown in Figure 6.

The PoE allows the Ethernet port to draw power from an IEEE 802.3at compliant source.  
*OmniAccess Stella AP supports the power adapter provided by ALE ONLY.*

#### Before You Begin

Refer to the sections below before beginning the installation process.

##### Pre-installation Checklist

Before installing your OAW-AP1320 Stellar access point, be sure that you have the following items:

- 8-conductor, CAT5 or better UTP cable of required length.
- One of the following power sources:
  - IEEE 802.3at compliant Power over Ethernet (PoE) source (PoE switch or PoE injector).
  - AC-DC adapter (sold separately), output voltage DC 48V, output current  $\geq 0.5A$
- A terminal or a notebook

#### Identifying Specific Installation Locations

You can mount the OmniAccess Stellar AP on a ceiling rail or on a

wall. You should first determine the location of the installation. The installation position is located at the center of the required coverage area and should be free from obstructions or obvious sources of interference.

- Minimize the number of obstructions (such as walls) between the AP and user terminals.
- Electronic equipment or devices (such as microwave ovens) which may produce radio frequency noise should be away from the installation position of the AP.

*It is strictly prohibited to install around stagnant water, water seepage, leakage or condensation. Avoid cable condensation or water seepage along the cables connecting to the AP.*

#### AP Installation

Refer to mounting kits installation Guide.

#### Verifying Post-Installation Connectivity

The LED on the AP can be used to verify that the AP is receiving power and initializing successfully.

#### Product Specifications

##### OAW-AP1320 series Dimensions/Weight

##### Unboxed OAW-AP1321:

- Net Weight: 1.64lbs / 0.74kg
- Dimensions (HxWxD): 7.1 inches x 7.1 inches x 1.42 inches (18 cm x 18cm x 3.6cm)

##### Unboxed OAW-AP1322 (external antennas)

- Net Weight: 1.65lbs / 0.75kg
- Dimensions (HxWxD): 7.1 inches x 7.7 inches x 1.42 inches (18 cm x 19.8cm x 3.6cm)

#### Environmental

- Operating
  - Temperature: 0°C to +50°C (+32°F to +122°F)
  - Humidity: 10% to 90% non-condensing
- Storage and transportation
  - Temperature: -40°C to +70°C (-40°F to +158°F)

For additional specifications on this product, please refer to the Datasheet.

#### Contacting Alcatel-Lucent Enterprise

Website Support	
Main Site	<a href="https://www.al-enterprise.com/">https://www.al-enterprise.com/</a>
Support Site	<a href="https://businessportal2.alcatel-lucent.com">https://businessportal2.alcatel-lucent.com</a>
Support Email	ebg_global_supportcenter@al-enterprise.com
Telephone Support	
North America	1-800-995-2696
Latin America	1-877-919-9526
Europe	+800 00200100 (Toll Free) or +1(650)385-2193
Asia Pacific	+65 6240 8484
Other Region	1-818-878-4507